

FRESH HAYSTACK

10500 Little Patuxent Pkwy
Suite 620
Columbia, MD 21044

855.55.CANDA (22632)
www.freshhaystack.com
info@freshhaystack.com

COMPANY OVERVIEW

Fresh Haystack, a division of CANDa, is a seamless and modular case management solution that was born out of years of experience in working with a multitude of enterprise solutions that were expensive, difficult to navigate, costly and slow to implement. With a dedication to 'getting things done,' we knew there had to be a better way.

CANDa provides services and solutions that offer breakthrough agility with focus on development and delivery processes that are dynamically updated, modular and secure. Our work includes vast experience and a proven history in the government marketplace and Fortune 500 companies.

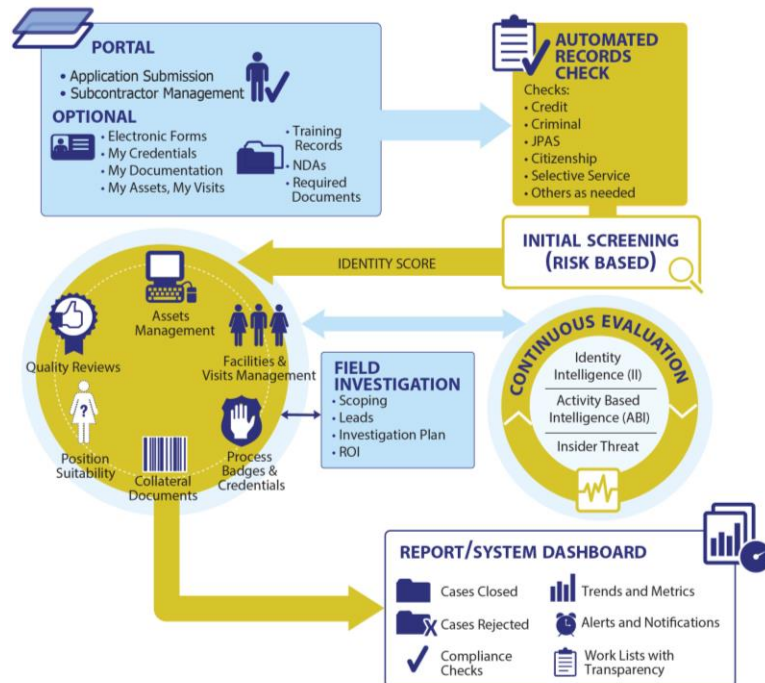
CAPABILITIES

- Case Management Solutions
- Investigations Management
- Continuous Evaluation and Insider Threat
- Personnel Security Solutions
- Risk / Threat Assessments

HOW WE MAKE A DIFFERENCE

We have experience with stepping in tough, sinking projects, disjointed IT organizations, with customer service concerns, multiple priorities and making them not only success but also referenceable accounts. And we do it consistently on time and budget.

ECOSYSTEM

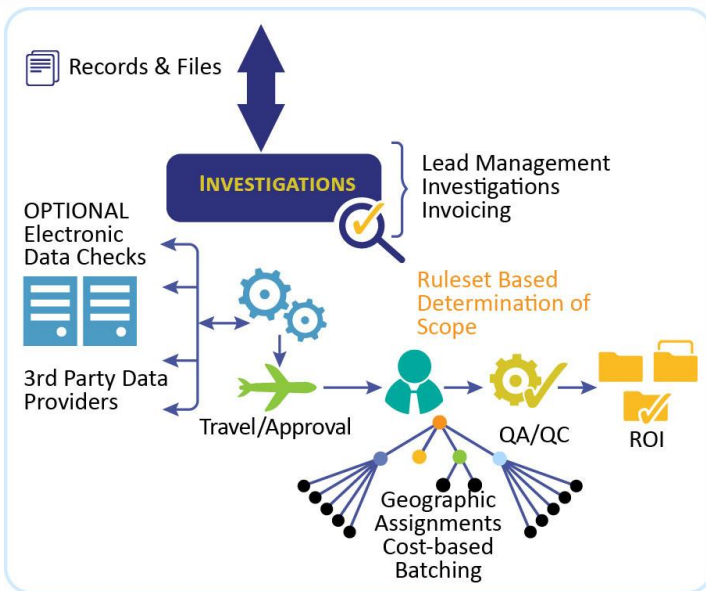


BENEFITS

- ROI
- Easy Integration
- Leads Auto-Assignment
- Scoping
- Investigation Workflows
- Data Validation & Quality
- Reporting & Metrics
- Compliance
- Multiple Internal / External Data Source
- Configurable Risk Model
- Security as a Service
- Flexible Licensing

Instant Velocity with a Fresh Approach

INVESTIGATIONS MANAGEMENT



During an investigation, the Fresh Haystack Investigators Portal provides an environment for the Background Investigator (BI) to upload individual investigative artifacts and Reports of Investigation (ROI). Flexibility is built into the environment so the queue of investigation leads can be managed in a way to prevent investigator overload, but control and/or redirect investigations to alternate investigators, based on investigative performance, case workload, case complexity, geography, etc.

This method and structure of Investigations Management allows the entire investigative workload of cases to be distributed across multiple Investigators in any manner deemed appropriate and ultimately speeds case completion and reduces the cost of the each completed BI.

The Fresh Haystack Investigations Management module is an environment that provides a method to scope a Background Investigation (BI), auto-create leads that are extracted from candidate SF85p/SF86 form inputs and additional criteria, and then auto-assigns those leads to investigators based on geographical location of the lead or based on the complexity of the case to be investigated and investigator capabilities. The Investigators Portal allows full-cycle accomplishment of:

Investigation initiation and assignment –
Geography-based

Investigation Scoping – Auto-scoped based on
Federal Investigative Standards (FIS) Tiers 1-5

Investigator Travel – Minimized travel based on
geographical assignment approach

Investigator Sourcing – Flexible sourcing via
controllable queue

Investigator Assignment – Automated
assignment, but with flexibility to manually assign

Investigator Review and Quality Assurance (QA) – QA checks built into workflow

Investigation Invoicing – Invoice generation via
BI Contractor with expectation that invoices will
be lower than normal due to geography-based or
case complexity-based lead assignment approach.